

Here's everything you need to know about your child's IEP! Just ask the 5 wh questions (who, what, where, when and why) plus the question how.

**WHO** is working with your child?

**WHAT** are they working on and what help is needed? (educational needs)

**WHERE** are they working? (small or regular classroom, separate classroom)

**WHEN** are they working with your child? (everyday, once a week, how much time per goal)

**WHY** are they working with your child? (learning/educational goals and needs)

**HOW** will you know your child is making progress? (quarterly notes, etc)

For more information on IEP's or additional questions and concerns please contact:

Linda McDowell, Parent Mentor  
Amanda School  
1300 Oxford State Rd.  
Middletown, Ohio 45044

[lmcdowell@middletowncityschools.com](mailto:lmcdowell@middletowncityschools.com)



Call  
420-4620

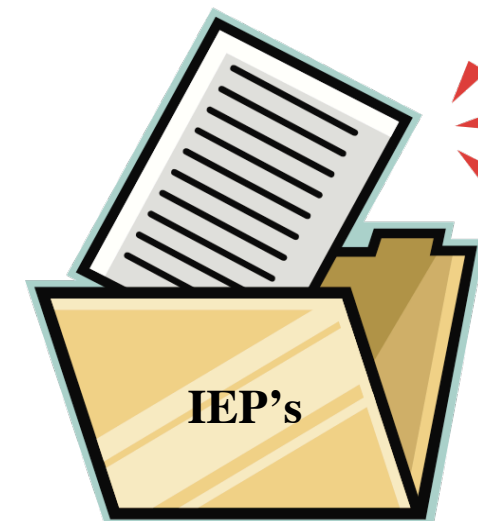


Visit the web page at  
[www.middletownparentmentor.com](http://www.middletownparentmentor.com)

*This brochure was developed by Linda McDowell for the parents of Middletown City School District.*

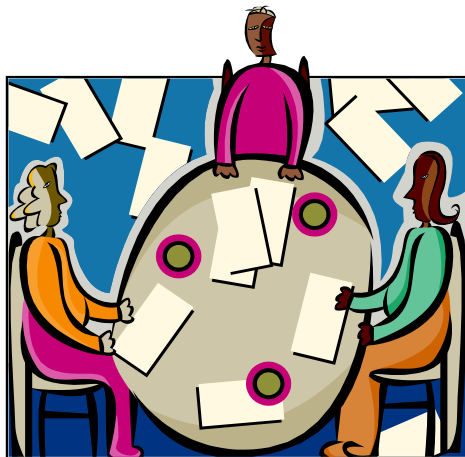
# Individualized Education Program (IEP)

## What Parents Need To Know



An Individualized Education Program (IEP) is a yearly written plan for a child with a disability that follows state and federal guidelines. Simply stated, it is a plan for success that talks very specifically about what the school will do to help your child. The IEP is based on your child's individual needs.

The first IEP begins with an evaluation that determines whether or not your child is eligible for special education services. The evaluation information gathered would be recorded in a written report called an Evaluation Team Report that will be used to develop the IEP.



An Individualized Education Program (IEP) includes:

- ✓ Present levels of performance (called PLOP). PLOPS tell us what the student is able to do including their strengths and needs. They provide a baseline or starting point so we are able to measure the growth or progress of the student.
- ✓ Annual goals. Long-term goals tell us what your child will be expected to learn in the next year. Goals can be academic or functional (independent skills).
- ✓ Benchmarks or objectives. These are the smaller steps that are needed to reach the long-term goal. Benchmarks and objectives help us see the progress your child is making throughout the year.

★ All of the above are found in section 6 of the IEP.

✓ Specially designed services. This is a list of all services and supports your child will need to be successful and learn like other students. This is found in section 7 of the IEP. So when you want to know what "special help" is happening for your child at school this is the section you turn to. Specially designed instruction includes **WHAT** your child is being taught and **HOW**. These may include:

- Speech, physical and occupational therapy
- Accommodation (changes in how a student is being taught)
- Modifications (changes in what is being taught)
- Support for medical needs
- Assistive technology
- Support for school personnel (such as training, aide, consultation)

✓ Transportation